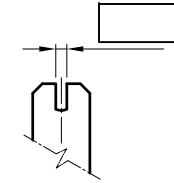


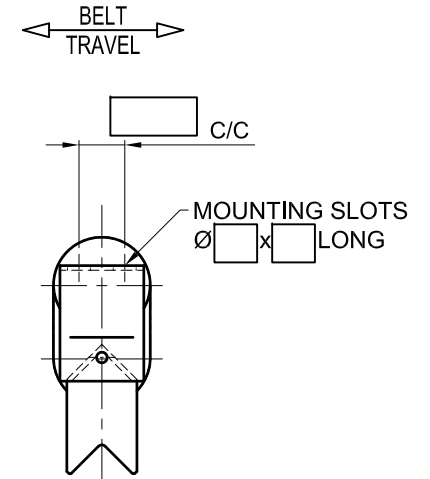
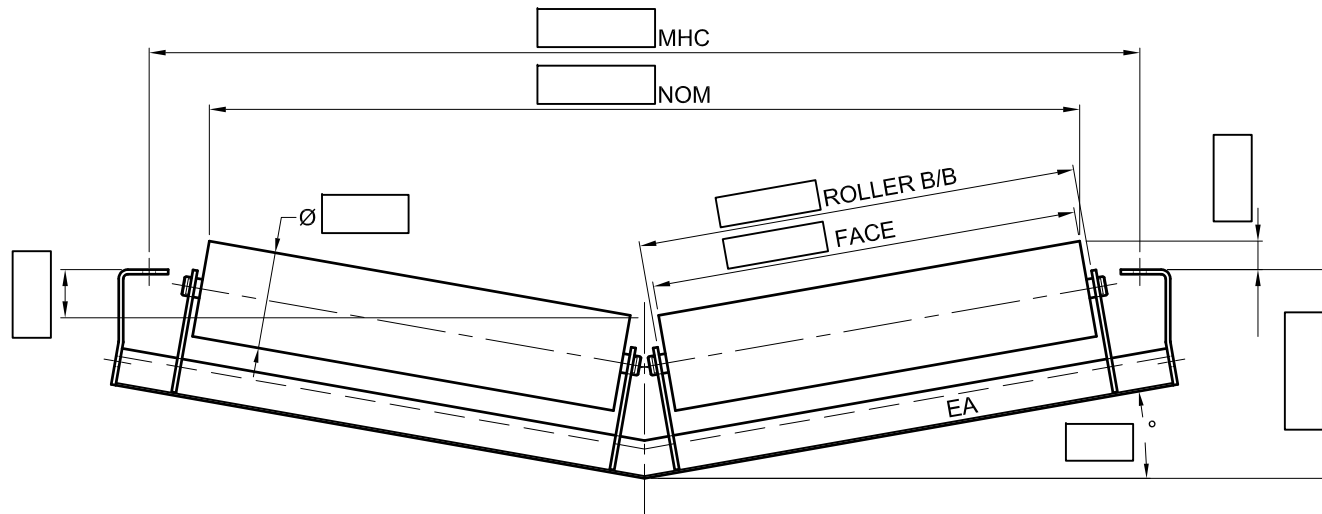


RKM INTERNATIONAL LTD  
 ROOM SUITE 2203, 22/F, OFFICE TOWER, LANGHAM PLACE  
 8, ARGYLE STREET, MONGKOK  
 KOWLOON, HONG KONG

THIS DRAWING AND ASSOCIATED CAD FILE REMAINS THE PROPERTY OF RKM INTERNATIONAL LTD  
 AND MUST NOT BE COPIED OR REPRODUCED IN ANY FORMAT WITHOUT WRITTEN PERMISSION FROM THE OWNER



ROLLER BRACKET  
 SLOT DETAIL



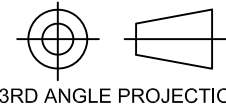
NOTES:

1. ROLLER ENDS TO BE PAINTED RED ENAMEL.
2. FOR STANDARD MATERIALS SPECIFICATIONS, REFER RKM CATALOGUE.
3. FRAME MATERIAL - ASNZS 3679.1-250 OR EQUIVALENT.
4. REMOVE ALL SHARP EDGES AND BURRS.
5. FRAME TO BE HOT DIPPED GALVANIZED TO ASNZ-4680 OR EQUIVALENT.
6. FOR STANDARD DIMENSIONAL TOLERANCES, REFER RKM CATALOGUE.

SERIES			
BEARING NUMBER :		RATING :	
SHAFT Ø	Ø	Ø	Ø
MASS ROTATING :	kg	TOTAL :	kg

ALL DIMENSIONS IN MM UNLESS NOTED OTHERWISE	DATE DRAWN	DRAWN BY	CHECKED	APPROVED BY	DATE	MATERIAL MS
	PROJECT:					MASS
DO NOT SCALE	TITLE: 2 ROLL ___° VEE RETURN SET					
	_____ mm BELT WIDTH					
3RD ANGLE PROJECTION	PART NO.			REVISION	SCALE(S)	SIZE
				-	NTS	A4
						SHEET 1 / 1

ZONE		REV	DESCRIPTION	BY	DATE
-	-	-		-	-
-	-	-		-	-
-	-	-		-	-
-	-	-		-	-



3RD ANGLE PROJECTION