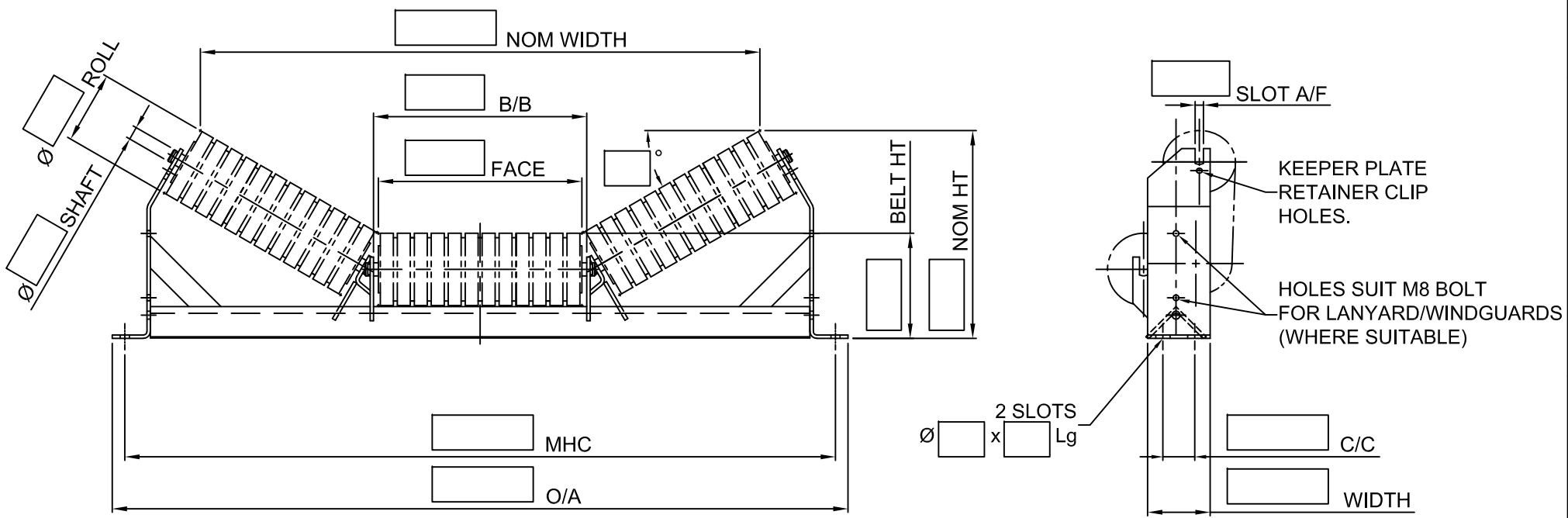




RKM INTERNATIONAL LTD  
 ROOM SUITE 2203, 22/F, OFFICE TOWER, LANGHAM PLACE  
 8, ARGYLE STREET, MONGKOK  
 KOWLOON, HONG KONG

THIS DRAWING AND ASSOCIATED CAD FILE REMAINS THE PROPERTY OF RKM INTERNATIONAL LTD  
 AND MUST NOT BE COPIED OR REPRODUCED IN ANY FORMAT WITHOUT WRITTEN PERMISSION FROM THE OWNER



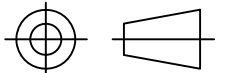
**NOTES:**

1. ROLLER ENDS TO BE PAINTED RED ENAMEL.
2. FOR STANDARD MATERIALS SPECIFICATIONS, REFER RKM CATALOGUE.
3. FRAME MATERIAL - ASNZS 3679,1-250 OR EQUIVALENT.
4. REMOVE ALL SHARP EDGES AND BURRS.
5. FRAME TO BE HOT DIPPED GALVANIZED TO ASNZ-4680 OR EQUIVALENT.
6. FOR STANDARD DIMENSIONAL TOLERANCES, REFER RKM CATALOGUE.

SERIES			
BEARING	NUMBER :	RATING :	
SHAFT	$\emptyset$ / $\emptyset$ / $\emptyset$		
MASS	ROTATING :	kg	TOTAL : kg

ALL DIMENSIONS IN MM  
 UNLESS NOTED  
 OTHERWISE

**DO NOT SCALE**



3RD ANGLE PROJECTION

DATE DRAWN	DRAWN BY	CHECKED	APPROVED BY	DATE	MATERIAL
					-

PROJECT:	MASS	
		-

TITLE: 3 ROLL \_\_\_\_ ° OFFSET TROUGH IDLER - IMPACT  
 \_\_\_\_\_ mm BELT WIDTH

PART NO.	REVISION	SCALE(S)	SIZE	SHEET
		NTS	A4	1 / 1

REVISION				
ZONE	REV	DESCRIPTION	BY	DATE