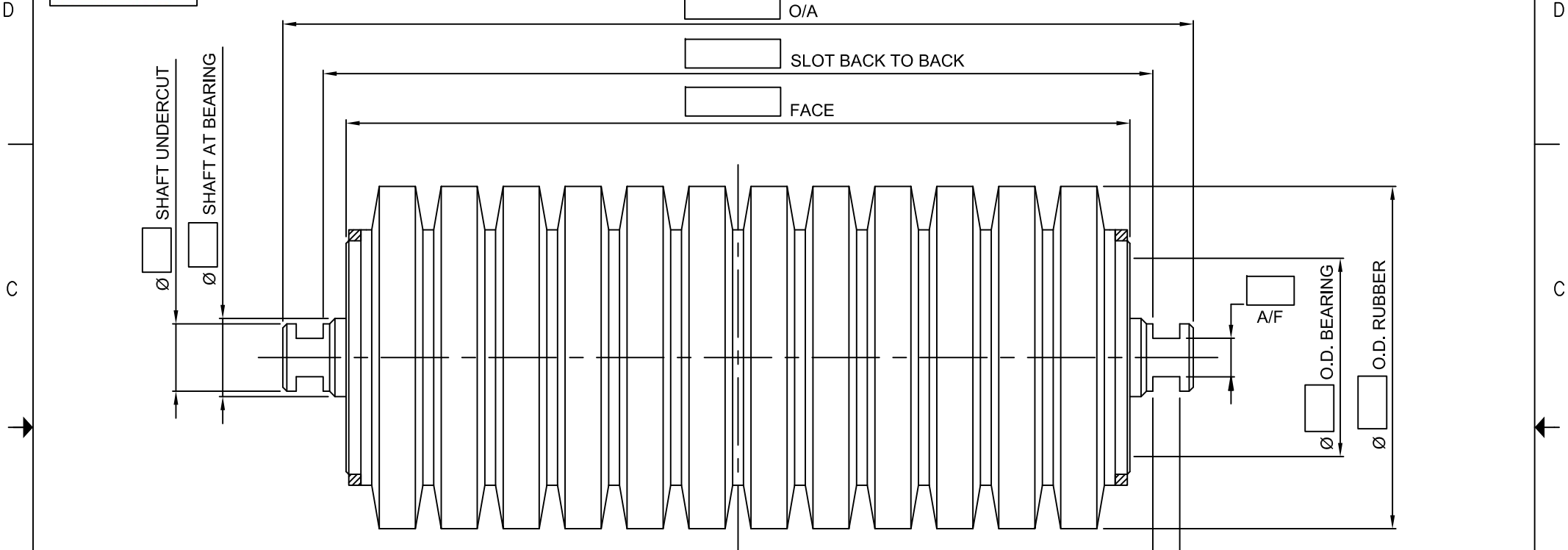




RKM INTERNATIONAL LTD  
 ROOM SUITE 2203, 22/F, OFFICE TOWER, LANGHAM PLACE  
 8, ARGYLE STREET, MONGKOK  
 KOWLOON, HONG KONG

THIS DRAWING AND ASSOCIATED CAD FILE REMAINS THE PROPERTY OF RKM INTERNATIONAL LTD  
 AND MUST NOT BE COPIED OR REPRODUCED IN ANY FORMAT WITHOUT WRITTEN PERMISSION FROM THE OWNER



- NOTES:**
1. ROLLER ENDS TO BE PAINTED WITH ENAMEL.
  2. FOR STANDARD MATERIALS SPECIFICATIONS, REFER RKM CATALOGUE.
  3. FOR STANDARD DIMENSIONAL TOLERANCES, REFER RKM CATALOGUE.
  4. ALL BARREL WELDS TO BE 3mm CONTINUOUS FILLET.

BARREL	STEEL
HOUSING	STEEL
MODEL	RS
SERIES	
SHAFT	∅ / ∅ / ∅
BEARING	/ RATING : kN / BRAND : RKM
MASS	ROTATING : kg   TOTAL : kg
COLOUR	RED

ALL DIMENSIONS IN MM UNLESS NOTED OTHERWISE	DATE DRAWN	DRAWN BY	CHECKED	APPROVED BY	DATE	MATERIAL
	PROJECT:					MASS
DO NOT SCALE	TITLE: _____ ROLLER - IMPACT					
	_____ mm BELT WIDTH					
3RD ANGLE PROJECTION	PART NO.			REVISION	SCALE(S)	SIZE
				NTS	A4	SHEET 1 / 1

REVISION		DESCRIPTION	BY	DATE
ZONE	REV			

A

A

D

D

C

C

B

B

A

A

8

7

6

5

4

3

2

1

8

7

6

5

4

3

2

1