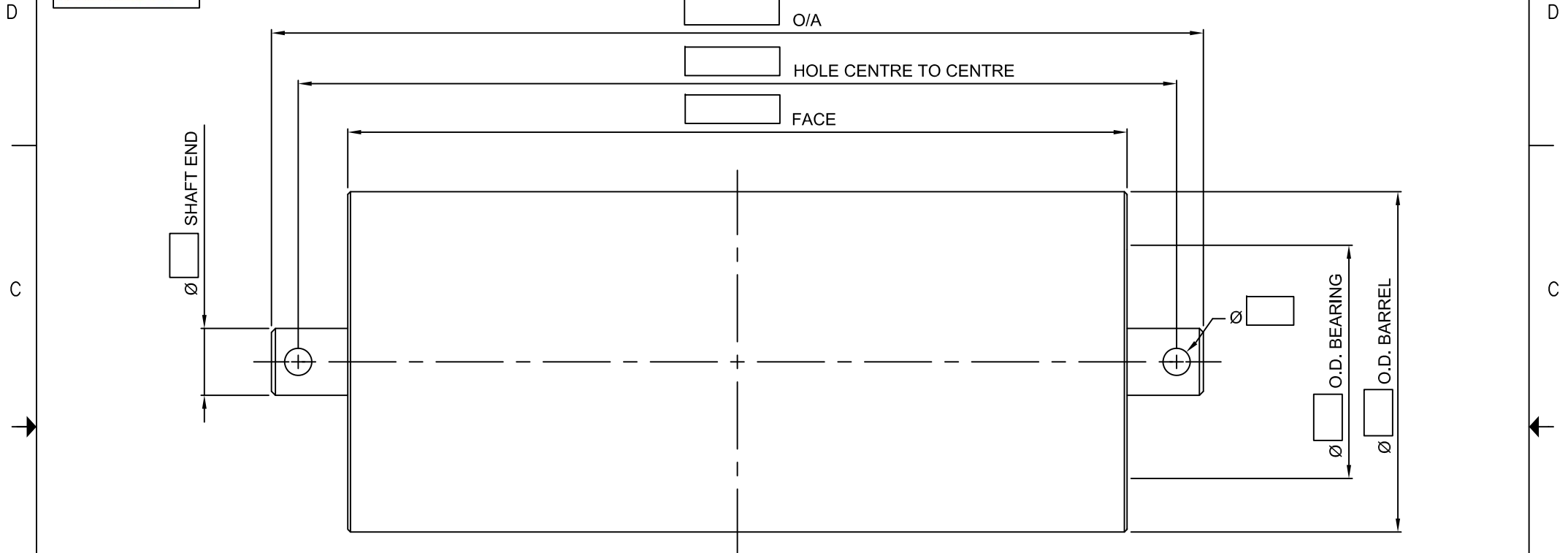




RKM INTERNATIONAL LTD  
 ROOM SUITE 2203, 22/F, OFFICE TOWER, LANGHAM PLACE  
 8, ARGYLE STREET, MONGKOK  
 KOWLOON, HONG KONG

THIS DRAWING AND ASSOCIATED CAD FILE REMAINS THE PROPERTY OF RKM INTERNATIONAL LTD  
 AND MUST NOT BE COPIED OR REPRODUCED IN ANY FORMAT WITHOUT WRITTEN PERMISSION FROM THE OWNER



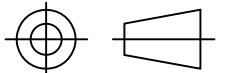
**NOTES:**

1. ROLLER ENDS TO BE PAINTED WITH ENAMEL.
2. FOR STANDARD MATERIALS SPECIFICATIONS, REFER RKM CATALOGUE.
3. FOR STANDARD DIMENSIONAL TOLERANCES, REFER RKM CATALOGUE.
4. ALL BARREL WELDS TO BE 3mm CONTINUOUS FILLET.

BARREL	STEEL
HOUSING	STEEL
MODEL	RS
SERIES	
SHAFT	∅ / ∅ / ∅
BEARING	/ RATING : kN / BRAND : RKM
MASS	ROTATING : kg   TOTAL : kg
COLOUR	RED

ALL DIMENSIONS IN MM UNLESS NOTED OTHERWISE	DATE DRAWN	DRAWN BY	CHECKED	APPROVED BY	DATE	MATERIAL
	PROJECT:					MASS
3RD ANGLE PROJECTION	TITLE: _____ ROLLER - SUSPENDED					
	_____ mm BELT WIDTH					
PART NO.				REVISION	SCALE(S)	SIZE SHEET
				NTS	A4	1 / 1

REVISION		DESCRIPTION	BY	DATE
ZONE	REV			



3RD ANGLE PROJECTION